



GOVERNMENT COLLEGE SEEMA (ROHRU)

District Shimla, Himachal Pradesh – 171207

A NAAC accredited B++ Co – educational Institution

Affiliated to Himachal Pradesh University, Shimla

www.ggcseema.edu.in Email: gcseema-hp@nic.in, gcseemahp@gmail.com Telefax: 01781-240167

1.4 FEEDBACK FROM STAKEHOLDERS

A Report on Feedback Survey Academic Session: 2023-2024

On Teaching, Learning, and Infrastructure Facilities
(based on Students, Alumni, Teachers and Parents Feedback)

SURVEY REPORT ON FEEDBACK ANALYSIS: 2023-24

Survey Sample Composition and Size:

This report provides a detailed analysis of feedback collected from various stakeholders at Government College Seema (Rohru) for the academic session 2023-24. As per official records, the college enrolled **1,969 students** across undergraduate and postgraduate programs. A randomized sample of **641 students**, representing **33%** of the total enrollment, was surveyed to ensure a balanced representation from all streams and programs. Feedback was also gathered from **37 teachers and 32 alumni**, reflecting the diverse perspectives of faculty and past students. The student, teacher, and alumni surveys were conducted online using Google Forms, ensuring a seamless and efficient data collection process. To capture parental feedback, a structured questionnaire was used, with **94 parents** participating during the PTA General House Meeting. The physical survey with parents allowed for more in-depth responses, as it facilitated direct interaction and clarification of queries. The feedback collected from these stakeholders is essential for assessing the institution's performance and identifying areas for improvement. Insights derived from this data will inform future planning and help enhance the quality of education, infrastructure, and support services. This comprehensive stakeholder engagement reflects the institution's commitment to continuous improvement through active participation and collaboration.

Table: Profile of the Overall Respondents

Respondents	Frequency	%age to Total Respondents
Students	641	79.73
Alumni	32	3.98
Teachers	37	4.60
Parents	94	11.69
Total	804	100

Objectives of the Survey:

The primary goal of the survey was to assess the level of satisfaction and collect constructive feedback from students, alumni, teachers, and parents, to evaluate the quality of education, infrastructure, and overall academic environment of the institution. The data for this report was collected using **well-structured questionnaires** designed on a **five-point rating scale** (ranging from "Strongly Disagree" to "Strongly Agree"), ensuring consistency and reliability in measuring perceptions and feedback. The collected information was analyzed using appropriate **statistical tools** to draw meaningful insights and identify areas of improvement.

Overview of Statistical Tools Used:

- The data have been analyzed using the simple percentage method and the results are presented through bar charts for better clarity and understanding.

Discussion and Findings:

- **Part A: Analysis of Student Feedback**

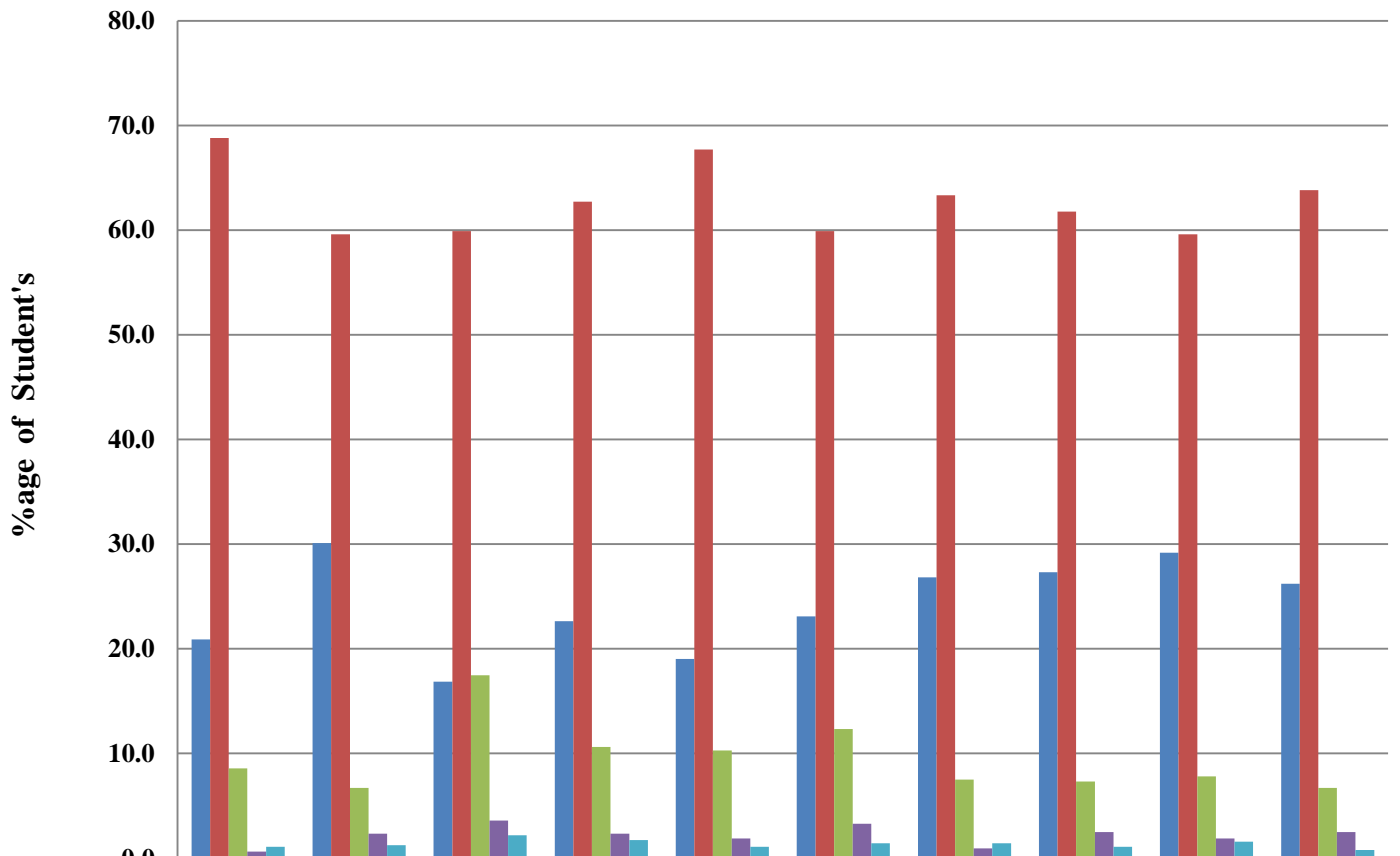
This section analyzes student feedback on curriculum delivery, faculty performance, infrastructure, extracurricular activities, and other facilities. The majority of students express satisfaction with the curriculum and syllabi, appreciating the effective delivery of courses throughout the academic session. They find the quality of teaching satisfactory, noting that teachers return checked class tests and assignments promptly. Additionally, students view the assessment and evaluation systems as fair, transparent, and effective. However, some students express dissatisfaction with the limited opportunities for experiential learning, such as internships, student exchanges, and field trips. They suggest increasing such opportunities to enhance practical exposure. Other recommendations include upgrading sports facilities and infrastructure, improving canteen services, and introducing more skill-based, job-oriented courses to enhance employability. Overall, while students are pleased with the academic experience, they believe that these enhancements would further enrich their learning environment and better prepare them for future career challenges.

- **Part B: Alumni Feedback Analysis**

Alumni feedback helps the institution assess its long-term impact on students' careers and personal growth. This section evaluates how effectively Government College Seema prepared alumni for employment, higher education, and other life challenges, while also highlighting suggestions for improvement. Feedback from alumni across different years reveals notable variations, with contrasting perspectives between earlier and recent graduates. Most alumni appreciate the relevance of the syllabi, acknowledging its role in enhancing livelihood opportunities. They also value the college's extracurricular activities, crediting them for fostering holistic development and life skills. Alumni express satisfaction with the campus infrastructure, academic culture, and the supportive learning environment. Additionally, they regard the institution's academic processes as transparent and student-centric in all initiatives. Suggestions for improvement include introducing more postgraduate programs to expand academic opportunities and strengthening hostel facilities to enhance student accommodation. Overall, alumni feedback reflects a positive experience, with recommendations aimed at further enriching the college's offerings and infrastructure.

PART: A

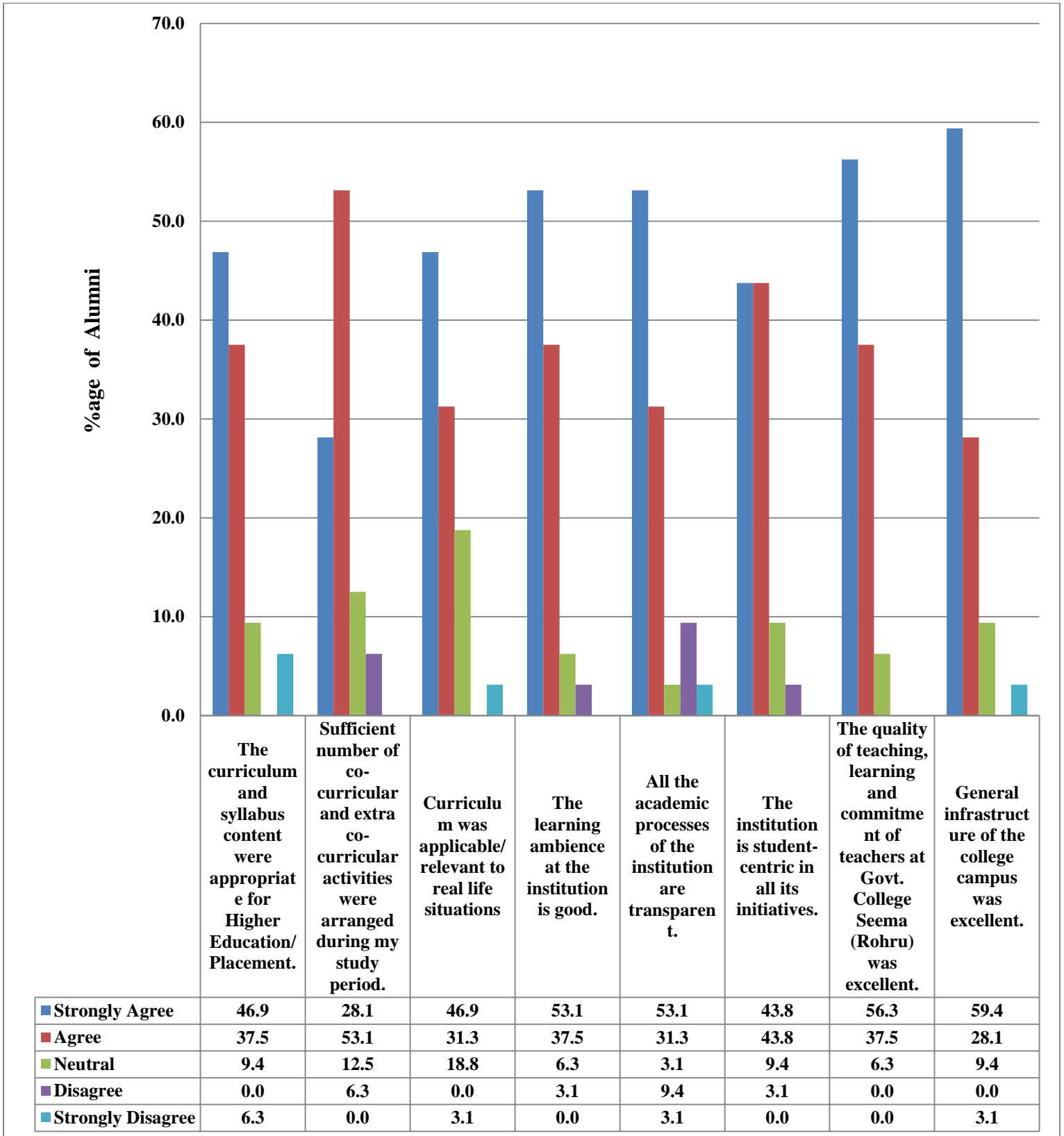
STUDENT'S FEEDBACK ANALYSIS: 2023-24



	Curriculum is comprehensive, relevant and has good balance between theory and application.	Sufficient reference material and books are available in the college library for the topics mentioned in the curriculum.	The curriculum promotes internship, student exchange and field visit opportunities.	The Curriculum inculcates soft skills, life skills and employability skills to make you ready for the world of work.	Curriculum is effective in developing analytical and problem solving skills.	Timely coverage of curriculum is possible in the mentioned number of hours.	Course delivery by teachers in the class is up to the mark.	Teachers make good usage of teaching aids in the class to facilitate teaching.	Teachers are always fair in the assessment process (assignments, class-tests, presentations, quiz etc.).	Teachers return checked class tests and assignments timely.
Strongly Agree	20.9	30.1	16.8	22.6	19.0	23.1	26.8	27.3	29.2	26.2
Agree	68.8	59.6	59.9	62.7	67.7	59.9	63.3	61.8	59.6	63.8
Neutral	8.6	6.7	17.5	10.6	10.3	12.3	7.5	7.3	7.8	6.7
Disagree	0.6	2.3	3.6	2.3	1.9	3.3	0.9	2.5	1.9	2.5
Strongly Disagree	1.1	1.2	2.2	1.7	1.1	1.4	1.4	1.1	1.6	0.8

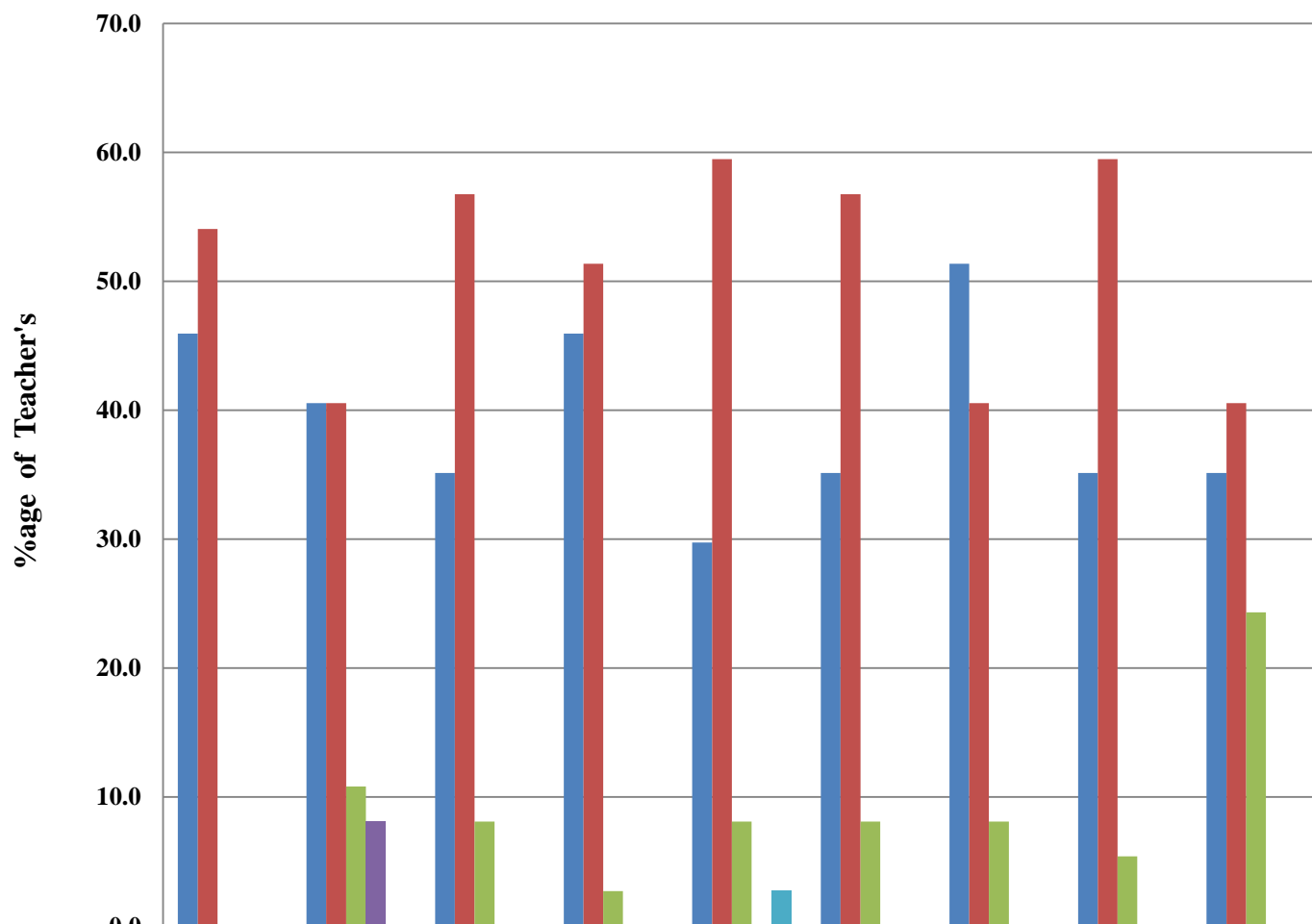
PART: B

ALUMNI FEEDBACK ANALYSIS: 2023-24



PART: C

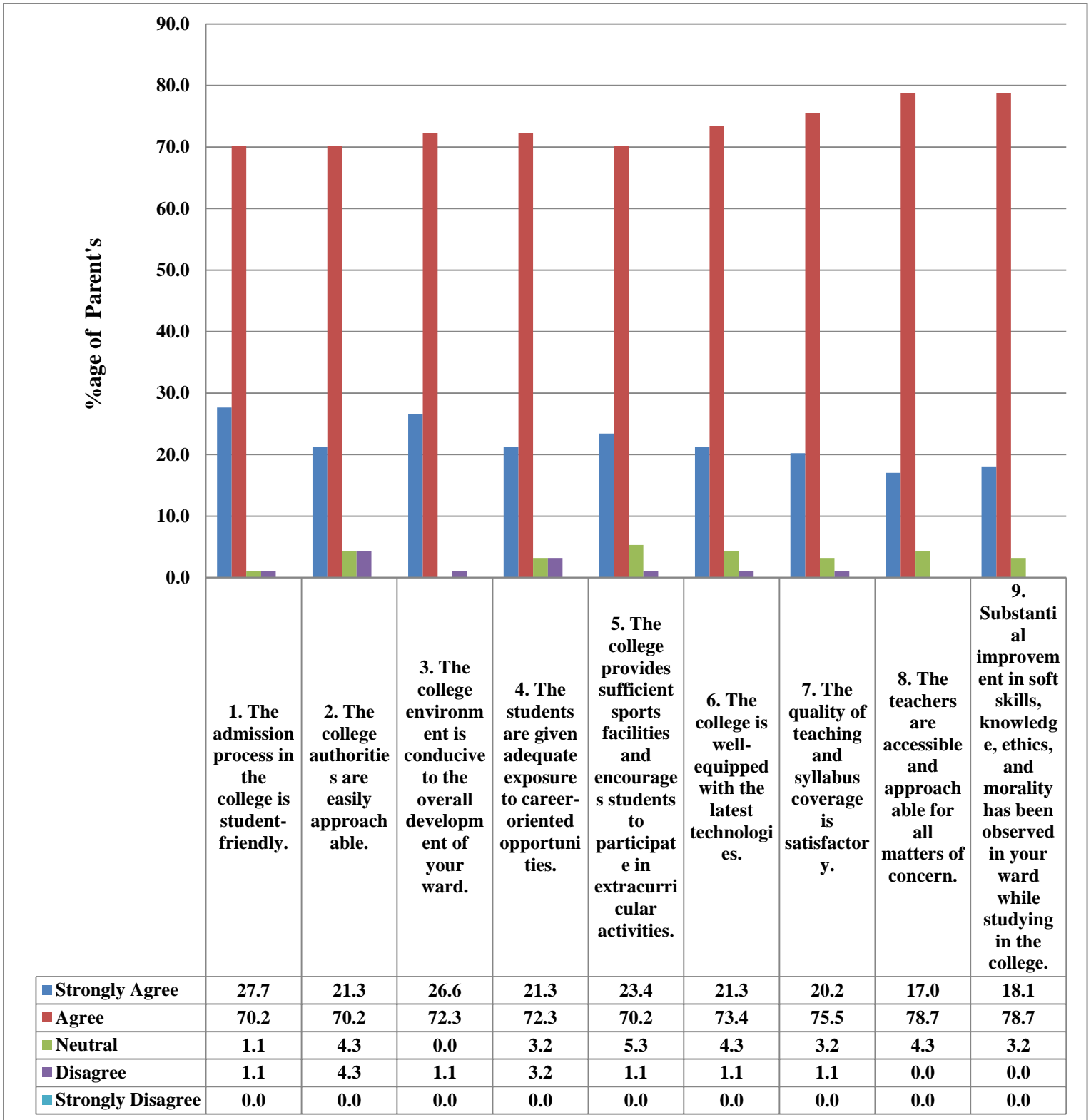
TEACHER'S FEEDBACK ANALYSIS: 2023-24



	Objectives and outcomes of the syllabi are well defined and clear.	Teachers get adequate time for the completion of the entire syllabus well in time with desired outcome.	The programmes (courses) has good balance between Theory and Application.	Curriculum is skill oriented and develops innovative thinking.	Curriculum has relevance to real life situations, reflects current trends and practices in the respective disciplines .	Curriculum addresses issues relevant to values and ethics.	The curriculum helps in developing personality by inculcating soft skills, life and employability skills.	Periodical revision of curriculum is undertaken.	There is a need for review of the syllabus.
Strongly Agree	45.9	40.5	35.1	45.9	29.7	35.1	51.4	35.1	35.1
Agree	54.1	40.5	56.8	51.4	59.5	56.8	40.5	59.5	40.5
Neutral	0.0	10.8	8.1	2.7	8.1	8.1	8.1	5.4	24.3
Disagree	0.0	8.1	0.0	0.0	0.0	0.0	0.0	0.0	0.0
Strongly Disagree	0.0	0.0	0.0	0.0	2.7	0.0	0.0	0.0	0.0

PART: D

PARENT’S FEEDBACK ANALYSIS: 2023-24



• Part C: Teacher Feedback Analysis


Faculty feedback provides valuable insights into their experience with the curriculum, teaching resources, and professional development. It sheds light on the challenges faced by teachers and offers suggestions for enhancing teaching practices and curriculum planning. Teachers play a crucial role in shaping human character and contributing to the peace and development of a progressive society. Their perspectives on key subjects influence the opinions and values of students. Recognizing the importance of teachers for students and the institution, an effort was made to assess their perceptions of the current curriculum at Government College Seema (Rohru) and gather suggestions for improvement. Overall, teachers express moderate satisfaction with the prescribed syllabi for their respective programs. However, opinions are mixed regarding the flexibility and time management involved in content delivery. Some teachers feel that several skill-based courses lack sufficient practical components, emphasizing the need for syllabus revisions. Additionally, faculty members recommend the swift implementation of the NEP 2020 to foster holistic development of the students.

Part D: Parent Feedback Analysis

Parents offer valuable insights into their children's academic progress, safety, and the institution's support systems. This section evaluates parental satisfaction with the academic environment and services at Government College Seema. Parents and guardians of enrolled students actively provided feedback on the college's curriculum, facilities, and overall operations. Overall, parents are satisfied with the academic and extracurricular activities their children engage in. They appreciate the effective content delivery, comprehensive syllabus coverage, and the smooth, student-friendly admission process. Many parents also observed notable improvements in their children's soft skills, knowledge, and ethical values throughout their time at the college, reflecting the institution's positive impact on personal development. However, parents have made a few suggestions for improvement. These include enhancing career guidance programs to better prepare students for future opportunities and addressing issues with water quality, particularly in the hostel facilities. Their feedback reflects general satisfaction, with targeted recommendations to further improve student welfare and support systems.

Summary and Conclusion:

This feedback survey has been an essential exercise to gain insights from key stakeholders and use the findings for enhancing the academic experience at Government College Seema. The institution remains committed to delivering quality education and fostering a positive learning environment through proactive interventions based on the feedback collected. This detailed analysis aims to provide a clear picture of the perceptions of various stakeholders and serve as a blueprint for future initiatives and improvements. The recommendations emerging from this report will guide the college in maintaining academic excellence and meeting the expectations of its diverse stakeholders effectively.



Principal
Principal
Govt. College Seema
Dist. Shimla H.P.